



FT8

The Newest, Most Popular Mode on MF/HF/VHF

What is

FT8 ?

It isn't...

$$F(\omega) = \int_{-\infty}^{\infty} f(t) e^{j\omega t} dt$$

Fourier Transform

It isn't...



A new Yaesu radio

rearr

FT8

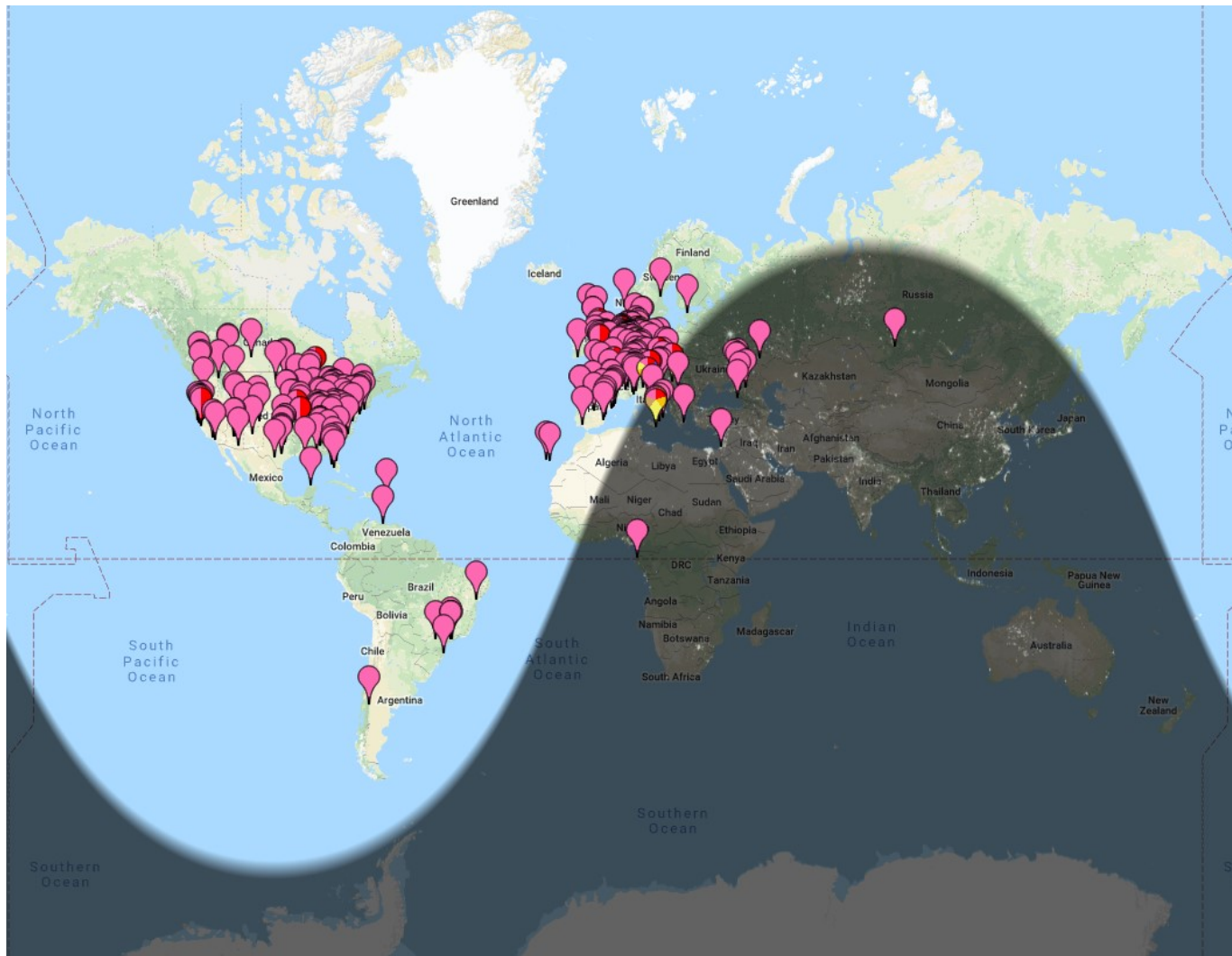
sets

or
a

or

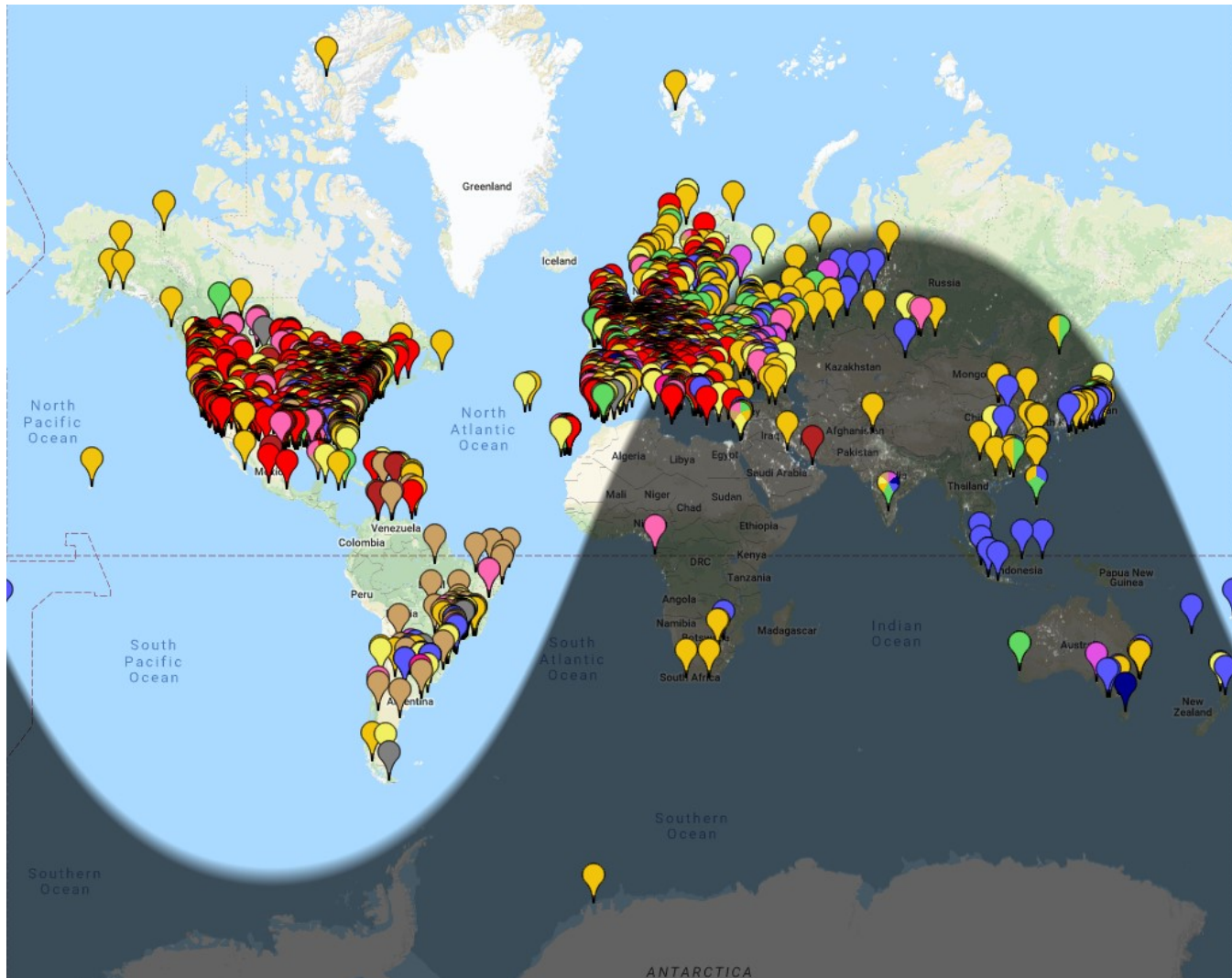
sets

One Hour of FT8 Activity – Thursday May 31 – 2PM – 10m



<https://pskreporter.info/pskmap.html>

One Hour of FT8 Activity – Thursday May 31 – 2PM – All Bands



<https://pskreporter.info/pskmap.html>

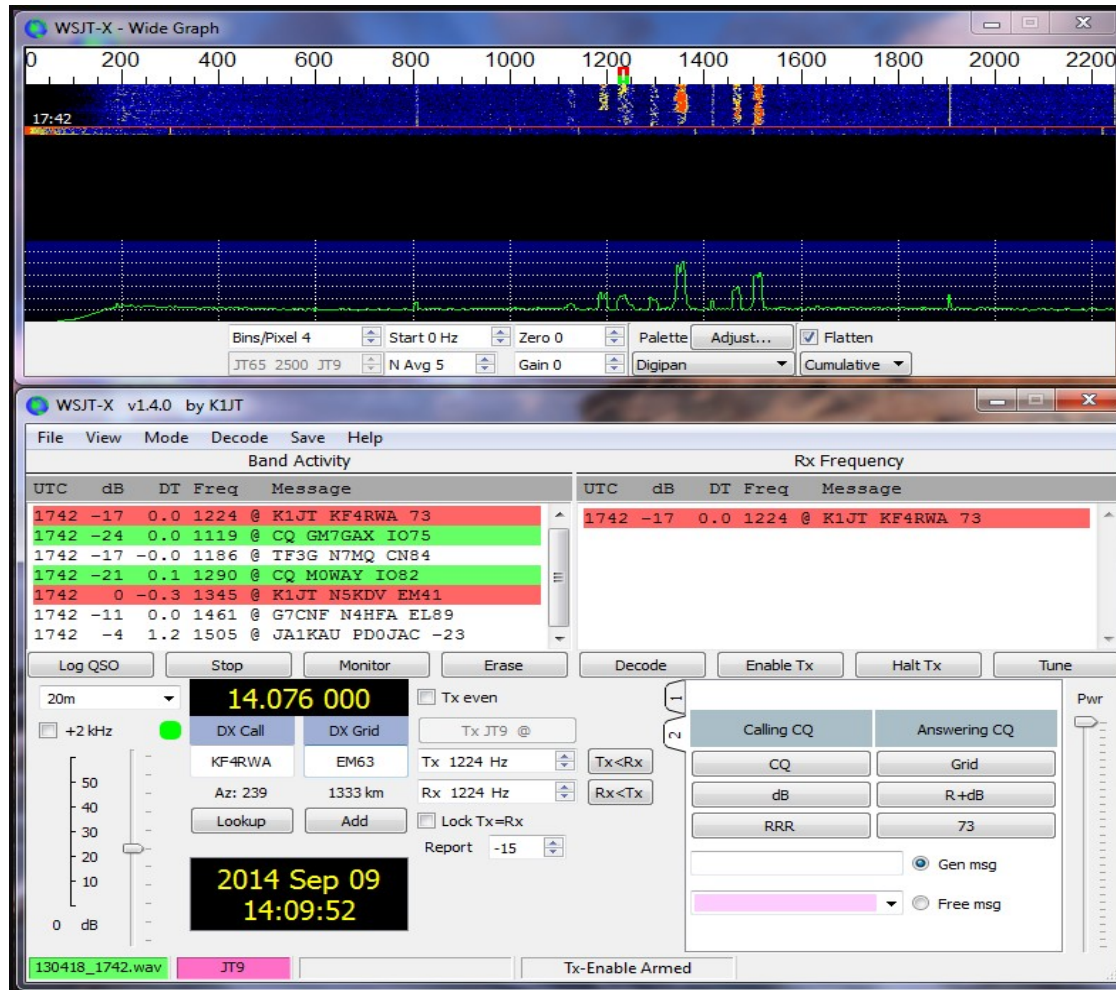
Hardware Requirements

Same as PSK

- SSB transceiver and antenna
- Computer running Windows (XP or later), Linux, or OS X
- 1.5 GHz or faster CPU and 200 MB of available memory.
- Monitor with at least 1024 x 780 resolution
- Computer-to-radio interface using a serial port or equivalent USB device for T/R switching, or CAT control, or VOX, as required for your radio-to-computer connections
- Audio input and output devices supported by the operating system and configured for sample rate 48000 Hz.
- Audio or equivalent USB connections between transceiver and computer
- A means for synchronizing the computer clock to UTC within ± 1 second (<http://www.timesynctool.com/>)

Software

WSJT-X from: <https://physics.princeton.edu/pulsar/k1jt/wsjt.html>



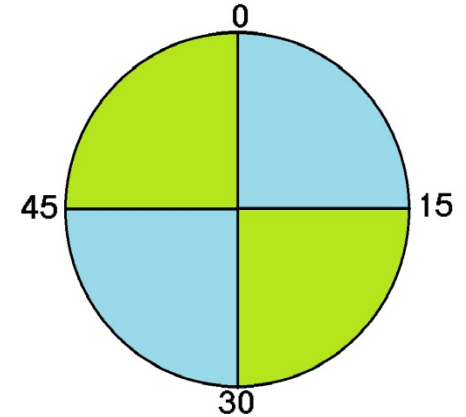
Message Structure

Each message contains 72 data bits (+FEC bits)
Up to 13 alphanumeric characters may be sent

Time is broken up into 15 second intervals

Each interval starts at exactly 0, 15, 30, or 45 seconds past the minute.

A station transmits for 15 seconds and then receives for 15 seconds.



Band Activity					Rx Frequency				
UTC	dB	DT	Freq	Message	UTC	dB	DT	Freq	Message
182600	-5	0.2	1500	~ CQ VA3HP EN92	182600	-5	0.2	1500	~ CQ VA3HP EN92
182630	-5	0.2	1500	~ CQ VA3HP EN92	182630	-5	0.2	1500	~ CQ VA3HP EN92
182630	-8	0.5	1708	~ KB7RUQ KC9RDG EN62	182700	-3	0.2	1500	~ CQ VA3HP EN92
182700	-3	0.2	1500	~ CQ VA3HP EN92	182715	Tx		1500	~ VA3HP WB2NFL FN30
182700	-19	0.1	800	~ CQ KC9ATJ EN71	182730	0	0.2	1500	~ WB2NFL VA3HP +03
182700	-6	0.2	1707	~ KB7RUQ KC9RDG EN62	182745	Tx		1500	~ VA3HP WB2NFL R+00
182730	0	0.2	1500	~ WB2NFL VA3HP +03	182800	-4	0.2	1500	~ WB2NFL VA3HP RRR
182800	-4	0.2	1500	~ WB2NFL VA3HP RRR	182815	Tx		1500	~ VA3HP WB2NFL 73
182830	-5	0.2	1500	~ WB2NFL VA3HP 73	182830	-5	0.2	1500	~ WB2NFL VA3HP 73
182915	-12	-0.6	1299	~ CQ K8SRB EN80	182845	Tx		1500	~ VA3HP WB2NFL 73
182945	-11	-0.6	1299	~ CQ K8SRB EN80					

Log QSO Stop Monitor Erase Decode Enable Tx Halt Tx Tune Menus

30m ● 10.136 000 Tx even/1st

DX Call: VA3HP DX Grid: EN92 Tx 1500 Hz Rx 1500 Hz Tx ← Rx Rx ← Tx

Az: 288 684 km Hold Tx Freq

Report -4 Auto Seq Call 1st NA VHF Contest

44 dB 2018 Jun 01 18:30:11

Generate Std Msgs

Next	Now	Pwr
<input type="radio"/>	<input type="radio"/>	Tx 1
<input type="radio"/>	<input type="radio"/>	Tx 2
<input type="radio"/>	<input type="radio"/>	Tx 3
<input type="radio"/>	<input type="radio"/>	Tx 4
<input checked="" type="radio"/>	<input type="radio"/>	Tx 5
<input type="radio"/>	<input type="radio"/>	Tx 6

Receiving FT8 Last Tx: VA3HP WB2NFL 73 11/15 WD:6m

